

Rack & Cabinet System

Belden—the most trusted brand for reliable signal transmission solutions—offers a complete selection of racking, cabinets, power distribution units, monitoring and airflow management products to meet your infrastructure needs and optimize system performance.

Section Table of Contents

Racks & Enclosure	Page
ADN Series	167
ASN Series	168
Accessories	169
Wall Mount Cabinets	
AWD Series	173
AWR Series	174
PDU	
PDU	175
DCX System	
DCX Optical Distribution Frame	176

Faster.
Easier.
Better.



ADN Series, LAN & Data Centre Cabinets 800Kg

ADN Series

LAN & Data Center Cabinets 800kg

Features

- 4 Sliding vertical rails for mounting
- Removable side panels for easy access
- Several styles of front and rear doors available
- Removable parts can be connected to the frame with grounding wires
- Maximum permissible load: 800kg
- Cable entries in top and bottom cover with adjustable sizes
- Optional installation of base to enable cabinets fixation, to provide cable access from underneath or ventilation
- Cabinet can be delivered as flat pack (disassembled packing) or pre-assembled

Applications

Belden Enclosures for use in 19" Data, Telecommunication, LAN and Server applications. Varying depths are available for various applications

Standards

- EIA/ECA-310-E
- IEC 60297-2-100
- DIN 41494; PART 1 and 7
- RoHS compliant

ADN Series Cabinets

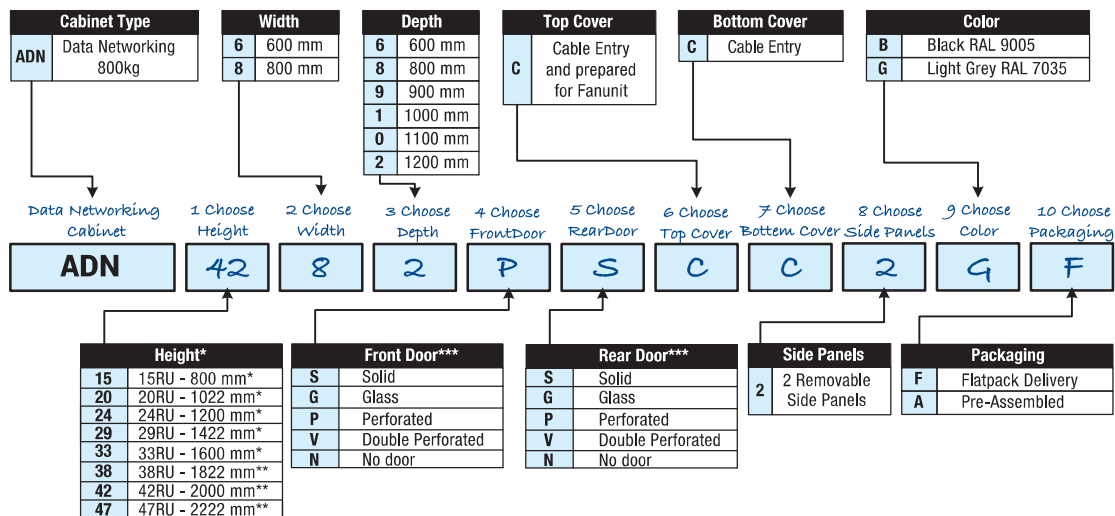
Belden Part Number	Description	Package
ADN2468GVCC2BF	24U, 600 (W) *800 (D), front single glass hinge door and split perforated rear doors, Black	Flatpack*
ADN2468GVCC2BA	24U, 600 (W) *800 (D), front single glass hinge door and split perforated rear doors, Black	Assembled*
ADN2968GVCC2BF	29U, 600 (W) *800 (D), front single glass hinge door and split perforated rear doors, Black	Flatpack
ADN2968GVCC2BA	29U, 600 (W) *800 (D), front single glass hinge door and split perforated rear doors, Black	Assembled*
ADN3381GPCC2BF	33U, 800 (W) *1000 (D), front single glass hinge door and split perforated rear doors, Black	Flatpack
ADN3381GPCC2BA	33U, 800 (W) *1000 (D), front single glass hinge door and split perforated rear doors, Black	Assembled*
ADN3868PVCC2BF	38U, 600 (W) *800 (D), front single perforated hinge door and split perforated rear doors, Black	Flatpack
ADN3868PVCC2BA	38U, 600 (W) *800 (D), front single perforated hinge door and split perforated rear doors, Black	Assembled*
ADN4288PVCC2BF	42U, 800 (W) *800 (D), front single perforated hinge door and split perforated rear doors, Black	Flatpack
ADN4288PVCC2BA	42U, 800 (W) *800 (D), front single perforated hinge door and split perforated rear doors, Black	Assembled*
ADN4282PVCC2BF	42U, 800 (W) *1200 (D), front single perforated hinge door and split perforated rear doors, Black	Flatpack
ADN4282PVCC2BA	42U, 800 (W) *1200 (D), front single perforated hinge door and split perforated rear doors, Black	Assembled*

*Flatpack package: All cabinet components packed together for delivery and need to be assembled on site.

*Assembled package: The cabinet has been assembled before factory delivery.

Tailored ADN Cabinets

Building a Smart Part Number



Notes

* Height 15U, 20U, 24U, 29U, 33U in combination 600mm wide is only available for depths of 600mm and 800 mm

** 800mm wide cabinets only available in heights 38U, 42U and 47U.

*** Single doors are left hand out swing

ASN Series

LAN & Data Center Cabinets 1300kg

Features

- 4 Sliding vertical rails for mounting
- Side panels: split into 2 lockable parts for 42U cabinet
- Front and rear door: pluggable front door and rear doors, with external hinges
Turning angle up to 180 degrees
- Removable parts can be connected to the frame with grounding wires
- Maximum permissible load: 1300kg
- Casters: built-in design
- Sliding and adjustable cable entries on top and bottom. Entries are with the design to prevent wires from scratching
- Cabinet can be delivered as flat pack (disassembled packing) or pre-assembled

Applications

Belden Enclosures for use in 19" Data, Telecommunication, LAN and Server applications. Varying depths are available for various applications

Standards

- EIA/ECA-310-E
- IEC 60297-2-100
- DIN 41494; PART 1 and 7
- RoHS compliant



ASN Series, LAN & Data Centre Cabinets 1300kg

ASN Series Cabinets

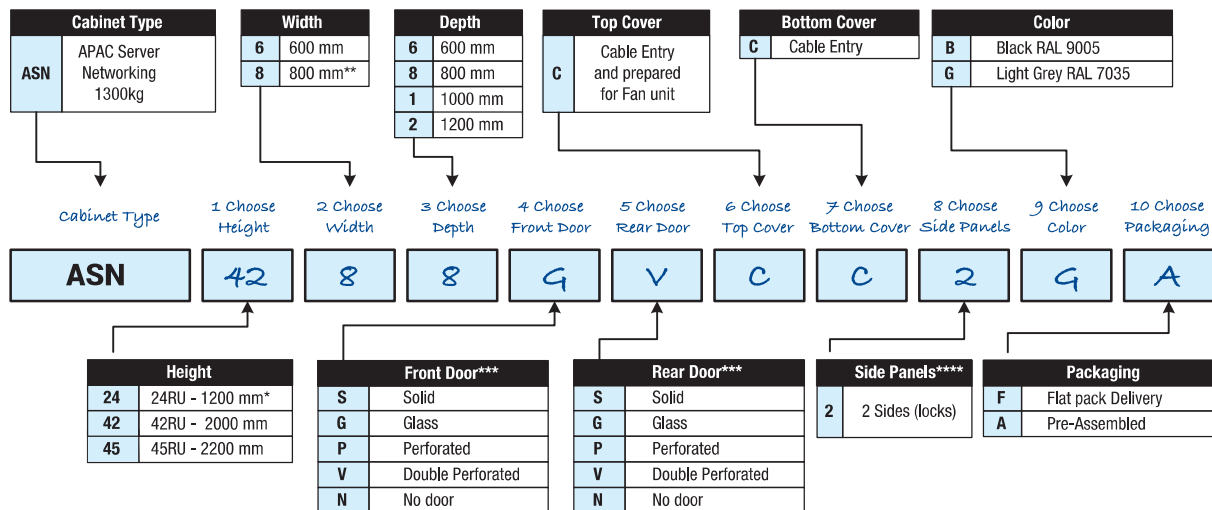
Belden Part Number	Description	Package
ASN4288PVCC2BF	42U, 800(W)* 800(D), front single perforated hinge door and split perforated rear doors, Black	Flatpack*
ASN4288PVCC2BA	42U, 800(W)* 800(D), front single perforated hinge door and split perforated rear doors, Black	Assembled*
ASN4281PVCC2BF	42U, 800(W)* 1000(D), front single perforated hinge door and split perforated rear doors, Black	Flatpack
ASN4281PVCC2BA	42U, 800(W)* 1000(D), front single perforated hinge door and split perforated rear doors, Black	Assembled*
ASN4282PVCC2BF	42U, 800(W)* 1200(D), front single perforated hinge door and split perforated rear doors, Black	Flatpack
ASN4282PVCC2BA	42U, 800(W)* 1200(D), front single perforated hinge door and split perforated rear doors, Black	Assembled*

*Flatpack package: All cabinet components are packed together for delivery and need to be assembled on site.

*Assembled package: The cabinet has been assembled before factory delivery.

Tailored ASN Cabinets

Building a Smart Part Number



Notes

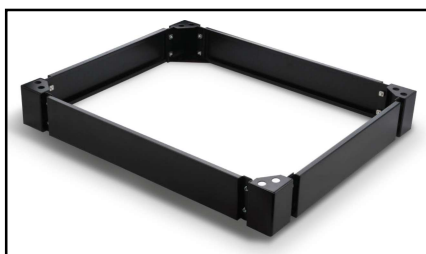
* 24U only available for 600wide in combination with 600 or 800mm deep cabinet

** 800mm wide cabinet not available for 600mm deep cabinet

*** Single doors are left hand out swing

**** 2 sides with 2 split panels each, for 42U cabinet

Faster.
Easier.
Better.



Bases for ADN Series Cabinets

Enclosure Accessories

Bases for ADN Series Cabinets

Application

Bases can be used to lift the cabinet to provide cable access from underneath. Suitable for ADN-series cabinets loaded up to 1000 kg

Construction

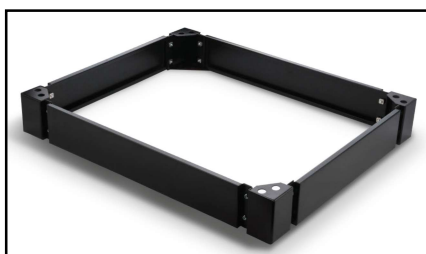
The profile is constructed out of SPCC cold rolled steel. The base's width and length measures should correspond to the depth and width of the cabinet. Height of the bases is 100mm and can support maximum capacity of 1000kg. Available in two colors: Black RAL9005 and Light Grey RAL7035.

Tailored Part Number

Building a Smart Part Number

Choose Accessory Cabinet	Choose Width	Choose Depth	Choose Color
ADAB2	8	1	1
Accessory Cabinet	Width	Depth	Color
ADAB2 Bases 1000Kg	6 600 mm	6 600 mm	1 Grey RAL 7035
	8 800 mm	8 800 mm	2 Black RAL 9005
		9 900 mm	
		1 1000 mm	
		2 1200 mm	

The 800mm width Base only has options of 600mm, 800mm and 1200mm depth



Bases for ASN Series Cabinets

Bases for ASN Series Cabinets

Application

Bases can be used to lift the cabinet to provide cable access from underneath. Suitable for ASN-series cabinets loaded up to 1500kg

Construction

The profile is constructed out of SPCC cold rolled steel. The base's width and length measures should correspond to the depth and width of the cabinet. Height of the bases is 100mm and can support maximum capacity of 1500kg. Available in two colors: Black RAL9005 and Light Grey RAL7035

Tailored Part Number

Building a Smart Part Number

Choose Accessory Cabinet	Choose Width	Choose Depth	Choose Color
ADAB3	8	1	1
Accessory Cabinet	Width	Depth	Color
ADAB3 Base 1500Kg	6 600 mm	6 547 mm (suitable for 600 mm depth cabinet)	1 Grey RAL 7035
	8 800 mm	8 747 mm (suitable for 800 mm depth cabinet)	2 Black RAL 9005
		9 847 mm (suitable for 900 mm depth cabinet)	
		1 947 mm (suitable for 1000 mm depth cabinet)	
		2 1147 mm (suitable for 1200 mm depth cabinet)	

Fan top unit with thermostat For 19" A-series enclosures

Application

Fan units especially made to fit all belden A-series free standing cabinets (part number starting with AD or AS), where they can be installed into the top cover of the enclosure where a blind panel is available. The unit can be installed in the top cover from outside of the enclosure, fixing it by 4 bolts. ADAF1xxx models are equipped with a thermostat (setting range 0-60 degree Celsius)

Construction

- Available in two colors: Black RAL9005 and Light Grey RAL7035
- Units available with 2 or 4 fans
- Available with several plug types: UK: BS1363, German: Schuko DIN 49441, US: NEMA 5-15P, C14: IEC 60320, GB type: IEC 884-2-5



Fan unit with 4 fans – ADAF1x42

Tailored Part Number

Building a Smart Part Number

Choose Accessory Cabinet		Choose Plug Type	Choose Fans	Choose Color
ADAF1		N	2	1
Accessory Cabinet		Plug type	Fans	Color
ADAF1	Fan Top Unit With Thermostat	A GB Type	2 2 Fans	1 Grey RAL 7035
		B UK Type	4 4 Fans	2 Black RAL 9005
		C C14		
		G German Type		
		N US Type		



Fan unit with 4 fans – ADAF1x42

Fan top unit For 19" A-series cabinets

Application

Fan units especially made to fit all Belden A-series free standing cabinets. Can be installed into the top cover of the enclosure where a blind panel is available. The unit can be installed in the top cover from outside of the enclosure, fixing it by 4 bolts

Construction

- Available in two colors: Black RAL9005 and Light Grey RAL7035
- Units available with 2 or 4 fans
- Available with several plug types: UK: BS1363, German: Schuko DIN49441, US: NEMA 5-15P, C14: IEC60320, GB type: IEC884-2-5

Tailored Part Number

Building a Smart Part Number

Choose Accessory Cabinet		Choose Plug Type	Choose Fans	Choose Color
ADAF4		N	2	1
Accessory Cabinet		Plug Type	Fans	Color
ADAF4	Fan Top Unit	A GB Type	2 2 Fans	1 Grey RAL 7035
		B UK Type	4 4 Fans	2 Black RAL 9005
		C C14		
		G German Type		
		N US Type		



Fan unit with 4 fans – ADAF4x42

Faster.
Easier.
Better.



Fan unit with 2 fans – ADAF2x22

1U fan unit for 19" A-series cabinets

Application

Fan unit especially made to fit Belden A-series, free standing cabinets. The unit can be installed horizontally inside the enclosure, fixed to the verticals

Construction

- Available in two colors: Black RAL9005 and Light Grey RAL7035
- Units available with 2, 3 or 4 fans
- Available with several plug types: UK: BS1363, German: Schuko DIN 49441, US: NEMA 5-15P, C14: IEC 60320, GB type: IEC 884-2-5

Tailored Part Number

Building a Smart Part Number

Choose Accessory Cabinet	Choose Plug Type	Choose Fans	Choose Color
ADAF2	N	2	1
Accessory Cabinet	Plug Type	Fans	Color
ADAF2 1U Fan Unit	A GB Type	2 2 Fans	1 Grey RAL 7035
	B UK Type	3 3 Fans	2 Black RAL 9005
	C C14	4 4 Fans	
	G German Type		
	N US Type		

3U fan unit for 19" A-series cabinets

Application

Fan unit especially made to fit Belden A-series, free standing cabinets. The unit can be installed horizontally inside the enclosure, fixed to the verticals

Construction

- Available in two colors: Black RAL9005 and Light Grey RAL7035
- Units available with 2 or 3 fans
- Available with several plug types: UK: BS1363, German: Schuko DIN 49441, US: NEMA 5-15P, C14: IEC 60320, GB type: IEC 884-2-5

Tailored Part Number

Building a Smart Part Number

Choose Accessory Cabinet	Choose Plug Type	Choose Fans	Choose Color
ADAF3	N	2	1
Accessory Cabinet	Plug Type	Fans	Color
ADAF3 3U Fan Unit	A GB Type	2 2 Fans	1 Grey RAL 7035
	B UK Type	3 3 Fans	2 Black RAL 9005
	C C14		
	G German Type		
	N US Type		

Regular Shelf with perforation For 19" A-Series Cabinets

Application

Regular 19" Shelf for supporting equipment up to 90kg load. Available in several depths and is mounted on each corner to the frame for maximum stability.

Construction

The maximum load capacity is 90kg. Available in two colors: Black RAL9005 and Light Grey RAL7035. Material: SPCC 1.2 cold rolled steel

Tailored Part Number

Building a Smart Part Number

Choose
Accessory Cabinet

ADAP52

Choose
Cabinet Depth

1

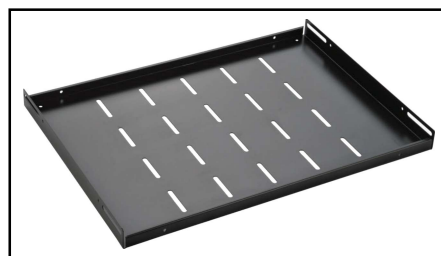
Choose
Color

1

Accessory Cabinet	
ADAP52	19" Shelf

Cabinet Depth	
6	600 mm
8	800 mm
9	900 mm
1	1000 mm
2	1200 mm

Color	
1	Grey RAL 7035
2	Black RAL 9005

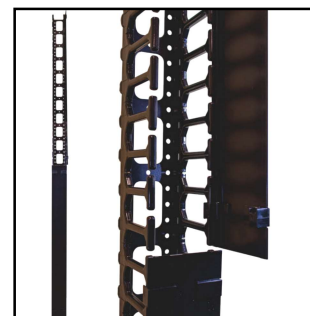


19" shelf

Cable manager for 800mm wide Free Standing A-Series Cabinets

Application

Vertical Cable Management Double finger strip for A-Series. Material: Metal and plastic moulded fingers on two sides with cover



Cable manager for 800mm wide Free Standing A-Series Cabinets

Part#	Height	Width	Depth	Application Max. cabinet size
ADAV6242	978 mm	97 mm	115 mm	24U
ADAV6282	1156 mm	97 mm	115 mm	28U
ADAV6322	1334 mm	97 mm	115 mm	32U
ADAV6382	1601 mm	97 mm	115 mm	38U
ADAV6422	1778 mm	97 mm	115 mm	42U

PDU Bracket for A-Series Cabinets

Application

Bracket mated with A-series standing cabinets for PDU mounting Material: SPCC Metal



ASAPDUB - PDU bracket for ASN series cabinets shall be used in pairs



ADAPDUB - PDU bracket for ADN series cabinets

Cabinet Joint Accessories for A-Series Cabinets

Application

For A-series cabinets joint when required Material: SPCC Metal



ASAJ - Joint for ASN series cabinets 4 bay kits for each 2 cabinets



ADAJ - Joint for ADN series cabinets 4 bay kits for each 2 cabinets

Faster.
Easier.
Better.



AWD Series, Wall Mount Cabinets

AWD Series

Wall Mount Double Section Cabinets with Removable Side Panels

Features

- Welded steel frame with a maximum load capacity of 30kg
- The range from 06RU to 22RU wall mount cabinet
- The cabinet has fully glass door in standard
- Removable side panels provide easy side access
- Top and bottom knockouts for cable entry
- The hinge system allows the door to open over 180°
- Lockable front door and rear section prevent unauthorized access to the cabinet
- Steel with durable powder coat finish
- Pre-assembled packaging to save field installation time

Applications

Ideal for a wide range of applications in Telecommunications, Networking and Industrial automation factory from small IT installs to collocation.

Standards

- EIA/ECA-310-E
- IEC 60297-2
- DIN 41494 part 1 and part 7

AWD Series Cabinets

Belden Part Number	Description	Package
AWD066055GFBAA	6U, 600(W)*550(D), Glass door, Double section wall mount cabinets, Black	Assembled
AWD096055GFBAA	9U, 600(W)*550(D), Glass door, Double section wall mount cabinets, Black	Assembled
AWD126055GFBAA	12U, 600(W)*550(D), Glass door, Double section wall mount cabinets, Black	Assembled
AWD156055GFBAA	15U, 600(W)*550(D), Glass door, Double section wall mount cabinets, Black	Assembled
AWD186055GFBAA	18U, 600(W)*550(D), Glass door, Double section wall mount cabinets, Black	Assembled
AWD226055GFBAA	22U, 600(W)*550(D), Glass door, Double section wall mount cabinets, Black	Assembled

AWR Series

Wall Mount Single Section Cabinets with Removable Side Panels

Features

- Welded steel frame with a maximum load capacity of 60kg
- The range from 06RU to 22RU wall mount cabinet
- The cabinet has fully glass door in standard
- Removable side panels provide easy side access
- Top and bottom knockouts for cable entry
- The hinge system allows the door to open over 180°
- Lockable front door to prevent unauthorized access to the cabinet
- Steel with durable powder coat finish
- Pre-assembled packaging to save field installation time

Applications

Ideal for a wide range of applications in Telecommunications, Networking and Industrial automation factory from small IT installs to collocation

Standards

- EIA/ECA-310-E
- IEC 60297-2
- DIN 41494 part 1 and part 7



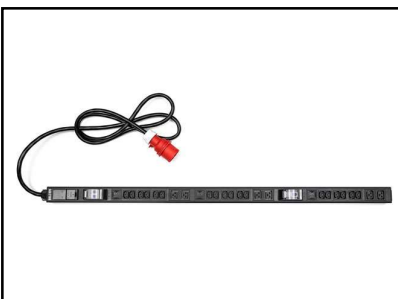
AWR Series, Wall Mount Cabinets

AWR Series Cabinets

Belden Part Number	Description	Package
AWR066045GFBAA	6U, 600(W)*450(D), Glass door, Single section wall mount cabinets, Black	Assembled
AWR066060GFBAA	6U, 600(W)*600(D), Glass door, Single section wall mount cabinets, Black	Assembled
AWR096045GFBAA	9U, 600(W)*450(D), Glass door, Single section wall mount cabinets, Black	Assembled
AWR096060GFBAA	9U, 600(W)*600(D), Glass door, Single section wall mount cabinets, Black	Assembled
AWR126045GFBAA	12U, 600(W)*450(D), Glass door, Single section wall mount cabinets, Black	Assembled
AWR126060GFBAA	12U, 600(W)*600(D), Glass door, Single section wall mount cabinets, Black	Assembled
AWR156045GFBAA	15U, 600(W)*450(D), Glass door, Single section wall mount cabinets, Black	Assembled
AWR156060GFBAA	15U, 600(W)*600(D), Glass door, Single section wall mount cabinets, Black	Assembled
AWR186045GFBAA	18U, 600(W)*450(D), Glass door, Single section wall mount cabinets, Black	Assembled
AWR186060GFBAA	18U, 600(W)*600(D), Glass door, Single section wall mount cabinets, Black	Assembled
AWR226045GFBAA	22U, 600(W)*450(D), Glass door, Single section wall mount cabinets, Black	Assembled
AWR226060GFBAA	22U, 600(W)*600(D), Glass door, Single section wall mount cabinets, Black	Assembled

Faster.
Easier.
Better.

PDU



PDU

Features

- High Durability: $\geq 5,000$ cycles
- Wide Temperature Range
 - Operation Temperature: $-10 - 45^{\circ}\text{C}$
 - Storage Temperature: $-10 - 45^{\circ}\text{C}$
- Max. Input Current per Phase: 32A
- Max. Input Power: 18.4kW
- Receptacle Type: IEC C13:10A & IEC C19:16A
- Input Plug Form with IEC C14(10A) & C20(16A)
- Surge Protection Device (SPD), Overload Protection (Air Switch), On/off Switch on request
- Pre-assembled packaging to save field installation time
- High Durability: $\geq 5,000$ cycles
- Highly customizable to meet most applications
- RoHS Compliant

Applications

Belden in-cabinet mounted basic Power Distribution Units (PDUs) distribute power to mission critical computing and networking equipment. Basic PDU's range covers multiple power configurations such as for inputs (Single or Three phase) and receptacles (C13, C19)

Standards

- IEC 60950
- IEC 60320
- IEC 60309

PDU

Parts#	Description	Quantity	Color
PDUA-B6AA0800000	Basic Power Distribution Unit, 230V, 10A, 2.3kW, Single Phase, 8xC13, 1U Horizontal, China standard plug(3pin,10A)	1	Black
PDUA-B1AA0800000	Basic Power Distribution Unit, 230V, 16A, 3.6kW, Single Phase, 8xC13, 1U Horizontal, IEC 60309 2P+E plug(IP44)	1	Black
PDUA-B1AB0800000	Basic Power Distribution Unit, 230V, 16A, 3.6kW, Single Phase, 8xC19, 1U Horizontal, IEC 60309 2P+E plug(IP44)	1	Black
PDUA-B2BA18B0600	Basic Power Distribution Unit, 230V, 32A, 7.3kW, Single Phase, 18xC13 & 6xC19, Vertical, IEC 60309 2P+E plug(IP44)	1	Black
PDUA-B3CA18B0600	Basic Power Distribution Unit, 230/400V, 16A, 9.2kW, Three Phase, 18xC13 & 6xC19, Vertical, IEC 60309 3P+N+E plug(IP44)	1	Black
PDUA-B3CA30B0600	Basic Power Distribution Unit, 230/400V, 16A, 9.2kW, Three Phase, 30xC13 & 6xC19, Vertical, IEC 60309 3P+N+E plug(IP44)	1	Black
PDUA-B4DA18B0600	Basic Power Distribution Unit, 230/400V, 32A, 18.4kW, Three Phase, 18xC13 & 6xC19, Vertical, IEC 60309 3P+N+E plug(IP44)	1	Black
PDUA-B4DA30B0600	Basic Power Distribution Unit, 230/400V, 32A, 18.4kW, Three Phase, 30xC13 & 6xC19, Vertical, IEC 60309 3P+N+E plug(IP44)	1	Black

Notes

- Surge Protection Device (SPD), Overload Protection (Air Switch), On/Off Switch will be upon Request
- Standard cord length is 3 meter
- PDU brackets are required when installed. ASAPDUB for ASN series cabinets and ADAPDUB for ADN series cabinets

DCX System

Optical Distribution Frame

Handle high amounts of fibers cable, and add density to fiber frames without compromising on ease-of-use, with the new DCX Optical Distribution Frame, which features innovations like slide-out cassette trays, complete bend radius protection and multiple frame and cabinet configuration options. This solution optimizes and futureproofs the ROI of fiber infrastructure, ensuring the ability to support ever-increasing data center bandwidths, IP migration and new types of technology requiring more fiber connection.



Scalable

Cable Management to support a potentially unlimited number of fiber connection

Customizable

Side-by-side, back-to-back and left or right configurations

High Density

4608 fibers per frame; up to 55% higher density without compromising ease-of-use

Modular

Migrate from Base-12 to Base-8/16/24 without changing housings

Headquarters

Global

Belden St. Louis
1 N. Brentwood Blvd. 15th Floor
St. Louis MO 63105 US
Phone: +314-854-8000
Fax: +314-854-8001
info@belden.com

Division Headquarters - Americas

Belden - Richmond
2200 U.S. Highway 27 South
Richmond, IN 47374 US
Phone: 765.983.5200
Toll Free: 1-800-BELDEN1
Fax: +765-983-5294
info@belden.com

Division Headquarters - Europe

Belden - EMEA
Edisonstraat 9, Postbus 9
5928 PG Venlo, 5900 AA The Netherlands
Phone: +31-773-878-555
Fax: +31-773-878-448
venlo.salesinfo@belden.com

Division Headquarters - Asia Pacific

Belden - Hong Kong
7/F Harbour View 2 T6 Science Park
East Avenue Hong Kong Science Park,
Shatin Hong Kong
Phone: +852-2955-0128
Fax: +852-2907-6933
hongkong.sales@belden.com

Asia Pacific

ANZ Region

Australia
Level 40, 140 William Street,
Melbourne, Victoria 3000,
Australia
Phone: 1800-500-775
australia.sales@belden.com

China Region

Beijing
Room 2507, 25/F Jintai Building
No.1 Xi Bahe Southern Road
Chaoyang District Beijing
People's Republic of China
Phone: +86-10-6591-8801
Fax: +86-10-6591-8933
china.marketing@belden.com

Shanghai

Unit 301, No. 19 Building
1515 Gu Mei Road
Caohejing High-Tech Park
Shanghai 200233
People's Republic of China
Phone: +86-21-3418-2688
Fax: +86-21-5445-2366/77
china.marketing@belden.com

Shenzhen

Rm 809, 8/F, New World Center
No.6009 Yitian Road
Fu Tian District
Shenzhen 518035
People's Republic of China
Phone: +86-755-2398-0778
Fax: +86-755-2398 0578
china.marketing@belden.com

Suzhou

333 Yanhu Road, Huaqiao Town
Kunshan City, Jiangsu Province Suzhou
215332, Jiangsu Province People's
Republic of China
Phone: +86-512-5796-1688
Fax: +86-512-5796-1222
china.marketing@belden.com

India Region

Bengaluru
Vaswani Presidio, 6th Floor
56 Panathur Rd, New Kaverappa
Layout, Kadubeesanahalli, Panathur
Bengaluru, Karnataka, India 560103
Phone: +91-80-6703-7800
india.sales@belden.com

Gurugram

Unit No :233-236, 2nd Floor, Spazedge,
Tower B, Sohna Road, Sector 47,
Gurugram Haryana 122002
Phone: +91-124-450-9999
Fax: +91-124-450-9900
india.sales@belden.com

Mumbai

Unit 2001 to 2003, 20th Floor, Kailas
Business Park, A Wing,
Veersawarkar Road, Vikhroli (W)
Mumbai 400079
India
Phone: +91-022-400-98200
india.sales@belden.com

Pune

Plot No D-228/1
Chakan MIDC Phase II
Village Bhamboli, Talkhed
District-Pune, Maharashtra
India 410507
Phone: +91-21-3563-8791
Fax: +91-21-3563-8790
india.sales@belden.com

NA Region

Japan
Level 3, Marunouchi Nijubashi Building,
3-2-2 Marunouchi Chiyoda-ku
Tokyo 100-0005 Japan
Phone: +03-6837-9613
japan.sales@belden.com

South Korea

505 KD Tower,
Wangsimni-ro 125,
Seongdong-gu,
Seoul, Republic of Korea
korea.sales@belden.com

SEA Region

Indonesia
Puri Indah Financial Tower,
Sue 805 Jl. Puri Indah Raya Blok T
No.8, RT.1/RW.2,
Kec. Kembangan, Jakarta Barat,
JAKARTA 11610 - Indonesia
Phone: +62-21-5799-3466
Fax: +62-21-5748-8888
indonesia.sales@belden.com

Malaysia

Suite 1-2, Lower Level 1
The Horizon Annexe, Avenue 7
Bangsar South, No. 8, Jalan Kerinchi
59200 Kuala Lumpur
Malaysia
Phone: +603-2247-1898
Fax: +603-2247-1878
malaysia.sales@belden.com

Philippines

One Global Place Level 10-1
25th Street & 5th Street
Bonifacio Global City,
Taguig Philippines
Phone: +632-3224-2029
philippines.sales@belden.com

Singapore

83 Clemenceau Avenue
#07-01/04 UE Square
Singapore 239920
Phone: +65-6879-9800
Fax: +65-6567-9656
singapore.sales@belden.com

Thailand

No. 3 Promphan 3 Building
UNIT 1725, 17th Floor, Soi Lad Phrao 3
Chomphon Sub-District, Chatuchak
District Bangkok 10900
Thailand
Phone: +66-2026-0525
Fax: +66-2024-6767
thailand.sales@belden.com

Vietnam

5007, Floor 5, CJ Building,
2bis-4-6 Le Thanh Ton street,
Ben Nghe ward, District 1,
Ho Chi Minh City, Vietnam
Phone: +84 28 6255 6800
Fax: +84 28 6255 6802
vietnam.sales@belden.com

Contact us

